



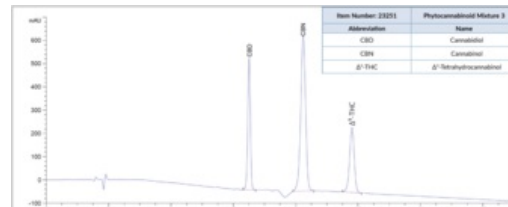
## Phytocannabinoid Mixture 3 (CRM)

Cat No: 23251 - 1 ea

### General Data

**Shipping:** dry ice

**Formulation:** A solution in methanol (1 mg/ml of each compound)



**Special advice:** Reference Materials RMs and Certified Reference Materials CRMs are dispatched directly to the end-user in accordance with ISO requirements. Please check regulation status before ordering; additional fees can apply.

### Product Overview

Phytocannabinoid mixture 3 (CRM) (Item No. 23251) is a certified reference material mixture that contains compounds that can be isolated from plants in the genus *Cannabis*. The mixture is supplied in an amber ampule in which the headspace has been purged with argon. It is designed for use as a reference standard for these major controlled substances during routine analytical checks using HPLC-UV or LC- or GC-MS instrumentation. This product is intended for research and forensic applications. Phytocannabinoid Mixture 3 (CRM) (Item No. 23251) is provided as a DEA exempt preparation. Included are Δ<sup>9</sup>-THC, cannabidiol, and cannabinol.

FP/21/24

**For research laboratory use only – Not for human diagnostic use.**

Buyers agree to purchase the material subject to Purchasing Terms that can be found on our website. Seek appropriate training to safely handle this product under normal conditions. Use the recommended personal protective equipment to prevent chemical exposures.

Bertin Bioreagent does not make any other warranty or representation whatsoever whether expressed or implied, with respect to these products. In no event will Bertin Bioreagent be liable for incidental, consequential or punitive damages.

#### Contact Bertin Bioreagent

Parc d'Activités du Pas du Lac  
10 bis avenue Ampère  
78180 Montigny le Bretonneux - France  
Tel.: +33 (0)139 306 036

<https://www.bertin-bioreagent.com/pa206/contact-us>  
<https://www.bertin-bioreagent.com>