

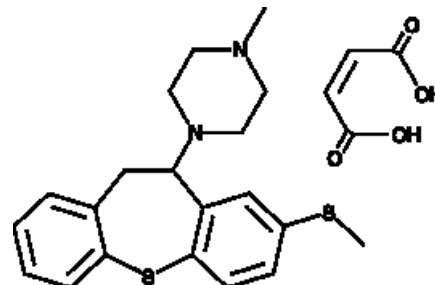


Methiothepin (maleate)

Cat No: 23138 - 10 mg

General Data

Shipping:	dry ice
Formulation:	A crystalline solid
Purity:	≥98%



Product Overview

Methiothepin is a non-selective antagonist of the serotonin (5-HT) receptor.^{39327} It is a potent antagonist of 5-HT_{1A} and 5-HT_{1B} (IC₅₀ = 16 nM and K_i = 0.2 nM, respectively) as well as 5-HT_{2A}, 5-HT_{2B}, and 5-HT_{2C} receptors (K_is = 3.16, 2.08, and 4.46 nM, respectively).^{40435,40434,41063} Methiothepin binds to 5-HT_{5A}, 5-HT_{5B}, 5-HT₆, and 5-HT₇ receptors with K_d values of 100, 15.8, 1.8, and 1 nM, respectively.^{39327} It has been used to characterize the role of serotonin in various biological processes, including renal vasodilation and gastrointestinal function.^{40402,40436}

FP/03/24

For research laboratory use only – Not for human diagnostic use.

Buyers agree to purchase the material subject to Purchasing Terms that can be found on our website. Seek appropriate training to safely handle this product under normal conditions. Use the recommended personal protective equipment to prevent chemical exposures.

Bertin Bioreagent does not make any other warranty or representation whatsoever whether expressed or implied, with respect to these products. In no event will Bertin Bioreagent be liable for incidental, consequential or punitive damages.

Contact Bertin Bioreagent

Parc d'Activités du Pas du Lac
10 bis avenue Ampère
78180 Montigny le Bretonneux - France
Tel.: +33 (0)139 306 036

<https://www.bertin-bioreagent.com/pa206/contact-us>
<https://www.bertin-bioreagent.com>