

Product Information

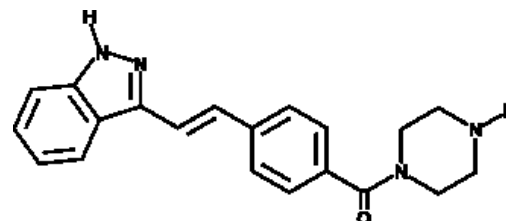


KW 2449

Cat No: 22207 - 5 mg

General Data

Shipping:	dry ice
Formulation:	A crystalline solid
Purity:	≥98%



Product Overview

KW 2449 is a potent multi-kinase inhibitor of fml-like tyrosine kinase 3 (FLT3), Abelson tyrosine-protein kinase 1 (ABL), ABL-T315I, and Aurora kinase (IC₅₀s = 6.6, 14, 4, and 48 nM, respectively).{40201} It has growth inhibitory activity against leukemia cells expressing FLT3 with activating mutations (GI₅₀s = 11-46 nM) and suppresses phosphorylation of FLT3 and STAT5 in MOLM-13 cells in a dose-dependent manner in vitro. KW 2499 (100 nM) inhibits colony formation of human primary acute myeloid leukemia (AML) cells with wild-type or activated mutant FLT3. It also induces MOLM-13 xenograft regression in a dose-dependent manner in vivo. Formulations containing KW 2499 are being investigated in clinical trials for treatment of relapsed or refractory AML.

FP/15/24

For research laboratory use only – Not for human diagnostic use.

Buyers agree to purchase the material subject to Purchasing Terms that can be found on our website. Seek appropriate training to safely handle this product under normal conditions. Use the recommended personal protective equipment to prevent chemical exposures.

Bertin Bioreagent does not make any other warranty or representation whatsoever whether expressed or implied, with respect to these products. In no event will Bertin Bioreagent be liable for incidental, consequential or punitive damages.

Contact Bertin Bioreagent

Parc d'Activités du Pas du Lac
10 bis avenue Ampère
78180 Montigny le Bretonneux - France
Tel.: +33 (0)139 306 036

<https://www.bertin-bioreagent.com/pa206/contact-us>
<https://www.bertin-bioreagent.com>