

Product Information

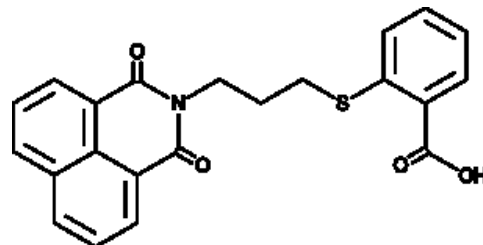


GRI-977143

Cat No: 21900 - 1 mg

General Data

Shipping:	dry ice
Formulation:	A crystalline solid
Purity:	≥98%



Product Overview

GRI-977143 is an agonist of G protein-coupled lysophosphatidic acid receptor 2 (LPA2) with an EC₅₀ value of 3.3 μ M in LPA2-transfected RH7777 cells.^{40202} It is selective for LPA2, having no activity at LPA1, LPA3, LPA4, and LPA5 at concentrations up to 10 μ M. GRI-977143 increases growth and reduces caspase-3 and -7 activation in LPA2-transduced MEF fibroblasts. It increases MM1 rat hepatoma cell invasion and inhibits apoptosis of IEC-6 cells induced by TNF- α , doxorubicin (Item No. 15007), or serum withdrawal. GRI-977143 also rescues apoptotic cells from γ -irradiation-induced injury in vitro and in vivo.^{40203}

FP/03/24

For research laboratory use only – Not for human diagnostic use.

Buyers agree to purchase the material subject to Purchasing Terms that can be found on our website. Seek appropriate training to safely handle this product under normal conditions. Use the recommended personal protective equipment to prevent chemical exposures.

Bertin Bioreagent does not make any other warranty or representation whatsoever whether expressed or implied, with respect to these products. In no event will Bertin Bioreagent be liable for incidental, consequential or punitive damages.

Contact Bertin Bioreagent

Parc d'Activités du Pas du Lac
10 bis avenue Ampère
78180 Montigny le Bretonneux - France
Tel.: +33 (0)139 306 036

<https://www.bertin-bioreagent.com/pa206/contact-us>
<https://www.bertin-bioreagent.com>