

Product Information

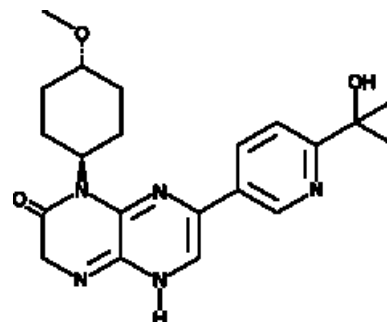


CC-223

Cat No: 19917 - 1 mg

General Data

Shipping:	dry ice
Formulation:	A crystalline solid
Purity:	≥98%



Product Overview

CC-223 is a potent inhibitor of mTOR ($IC_{50} = 16$ nM) that shows selectivity for mTOR over a panel of 246 other kinases.^{33446} It blocks signaling through both mTORC1 and mTORC2, inhibiting the phosphorylation of S6RP, 4EBP1, and Akt(S473) in cellular systems.^{33446} CC-223 inhibits growth and induces apoptosis in hematologic and solid tumor cell lines in vitro, and it exhibits dose-dependent tumor growth inhibition in multiple solid tumor xenografts in vivo.^{33446}

FP/28/24

For research laboratory use only – Not for human diagnostic use.

Buyers agree to purchase the material subject to Purchasing Terms that can be found on our website. Seek appropriate training to safely handle this product under normal conditions. Use the recommended personal protective equipment to prevent chemical exposures.

Bertin Bioreagent does not make any other warranty or representation whatsoever whether expressed or implied, with respect to these products. In no event will Bertin Bioreagent be liable for incidental, consequential or punitive damages.

Contact Bertin Bioreagent

Parc d'Activités du Pas du Lac
10 bis avenue Ampère
78180 Montigny le Bretonneux - France
Tel.: +33 (0)139 306 036

<https://www.bertin-bioreagent.com/pa206/contact-us>
<https://www.bertin-bioreagent.com>