

Product Information

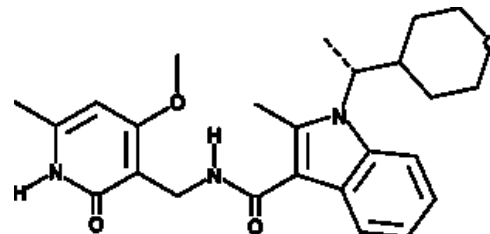


CPI-360

Cat No: 19125 - 500 µg

General Data

Shipping:	dry ice
Formulation:	A crystalline solid
Purity:	≥98%



Product Overview

CPI-360 is a selective EZH2 inhibitor with IC₅₀ values of 0.5 and 2.5 nM for wild-type EZH2 and Y641N mutant EZH2, respectively. {29633} It decreases cellular levels of H3K27me3 and H3K27me2 (EC₅₀s = 56 and 65 nM, respectively), triggering cell cycle arrest and ultimately resulting in apoptosis in a large panel of non-Hodgkin's lymphoma (NHL) cell lines. {29633} Twice daily, subcutaneous administration of 200 mg/kg of CPI-360 reduced tumor growth of KARPAS-422 xenografts in mice. {29633}

FP/06/24

For research laboratory use only – Not for human diagnostic use.

Buyers agree to purchase the material subject to Purchasing Terms that can be found on our website. Seek appropriate training to safely handle this product under normal conditions. Use the recommended personal protective equipment to prevent chemical exposures.

Bertin Bioreagent does not make any other warranty or representation whatsoever whether expressed or implied, with respect to these products. In no event will Bertin Bioreagent be liable for incidental, consequential or punitive damages.

Contact Bertin Bioreagent

Parc d'Activités du Pas du Lac
10 bis avenue Ampère
78180 Montigny le Bretonneux - France
Tel.: +33 (0)139 306 036

<https://www.bertin-bioreagent.com/pa206/contact-us>
<https://www.bertin-bioreagent.com>