

Product Information



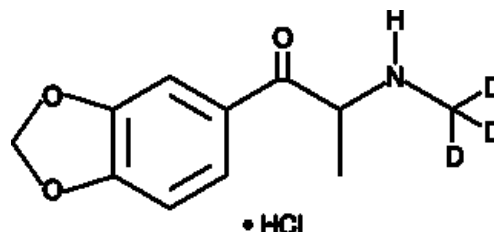
Methylone-d₃ (hydrochloride) (CRM)

Cat No: 18732 - 100 µg

General Data

Shipping: dry ice

Formulation: A 100 µg/ml solution in methanol



Special advice: Reference Materials RMs and Certified Reference Materials CRMs are dispatched directly to the end-user in accordance with ISO requirements. Please check regulation status before ordering; additional fees can apply.

Product Overview

Methylone-d₃ (hydrochloride) (CRM) (Item No. 18732) is intended for use as an internal standard for the quantification of methylone (Item Nos. 20891 10986) by GC- or LC-MS. Methylone is a cathinone that has been detected in products marketed as bath salts, plant food, and tablets. {19508,19756} It acts on components of the monoaminergic systems, similar to MDMA.{19757,19758} This product is intended for research and forensic applications.

FP/10/24

For research laboratory use only – Not for human diagnostic use.

Buyers agree to purchase the material subject to Purchasing Terms that can be found on our website. Seek appropriate training to safely handle this product under normal conditions. Use the recommended personal protective equipment to prevent chemical exposures.

Bertin Bioreagent does not make any other warranty or representation whatsoever whether expressed or implied, with respect to these products. In no event will Bertin Bioreagent be liable for incidental, consequential or punitive damages.

Contact Bertin Bioreagent

Parc d'Activités du Pas du Lac
10 bis avenue Ampère
78180 Montigny le Bretonneux - France
Tel.: +33 (0)139 306 036

<https://www.bertin-bioreagent.com/pa206/contact-us>
<https://www.bertin-bioreagent.com>