

Product Information

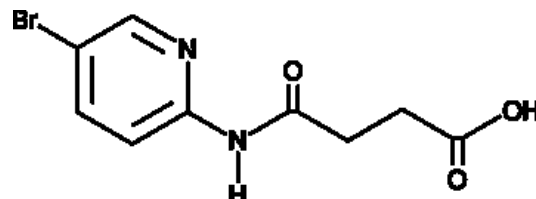


Bikinin

Cat No: 18381 - 5 mg

General Data

Shipping:	dry ice
Formulation:	A crystalline solid
Purity:	≥98%



Product Overview

The Arabidopsis shaggy-related kinases (ASKs) are plant kinases that are structurally similar to a Drosophila kinase, shaggy, which has key roles in development. ASKs are also similar to glycogen synthase kinase 3 isoforms, which are found in plants as well as animals. Bikinin is an inhibitor of several ASK isoforms when given at a concentration of 10 μ M.^{30819} After bikinin treatment, residual kinase activity was less than 10% for ASK α , γ , ϵ , ζ , η , ι , and 20% for ASK θ , while isoforms β and δ were not affected. Bikinin has little or no direct effect on a wide range of other kinases.^{30819} By inhibiting ASKs, bikinin activates signaling induced by the brassinosteroid, brassinolide.^{30819} Bikinin blocks the phosphorylation of SnRK2.3 by ASK η (also known as BIN2), upregulating signaling through abscisic acid (Item No. 10073).^{30817} Bikinin has been used to study the role of ASK-modulated brassinosteroid signaling in wheat and in viral infection of plants.^{30816,30820,30818}

FP/05/24

For research laboratory use only – Not for human diagnostic use.

Buyers agree to purchase the material subject to Purchasing Terms that can be found on our website. Seek appropriate training to safely handle this product under normal conditions. Use the recommended personal protective equipment to prevent chemical exposures.

Bertin Bioreagent does not make any other warranty or representation whatsoever whether expressed or implied, with respect to these products. In no event will Bertin Bioreagent be liable for incidental, consequential or punitive damages.

Contact Bertin Bioreagent

Parc d'Activités du Pas du Lac
10 bis avenue Ampère
78180 Montigny le Bretonneux - France
Tel.: +33 (0)139 306 036

<https://www.bertin-bioreagent.com/pa206/contact-us>
<https://www.bertin-bioreagent.com>