

# Product Information



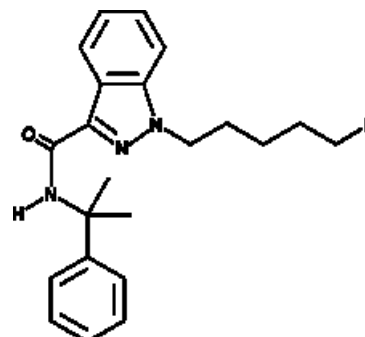
## 5-fluoro CUMYL-PINACA (CRM)

Cat No: 17726 - 1 mg

### General Data

**Shipping:** dry ice

**Formulation:** A 1 mg/ml solution in methanol



**Special advice:** Reference Materials RMs and Certified Reference Materials CRMs are dispatched directly to the end-user in accordance with ISO requirements. Please check regulation status before ordering; additional fees can apply.

### Product Overview

5-fluoro AB-PINACA (Item No. 14755) is a derivative of the synthetic cannabinoid AB-PINACA (Item No. 14038), which has recently been identified in illegal herbal products. 5-fluoro CUMYL-PINACA is an analog of 5-fluoro AB-PINACA in which the 1-amino-3-methyl-1-oxobutanyl group has been replaced with a cumyl group. The physiological and toxicological properties of this compound are not known. 5-fluoro CUMYL-PINACA is regulated as a Schedule I compound in the United States. This product is intended for research and forensic applications.

FP/17/24

For research laboratory use only – Not for human diagnostic use.

Buyers agree to purchase the material subject to Purchasing Terms that can be found on our website. Seek appropriate training to safely handle this product under normal conditions. Use the recommended personal protective equipment to prevent chemical exposures.

Bertin Bioreagent does not make any other warranty or representation whatsoever whether expressed or implied, with respect to these products. In no event will Bertin Bioreagent be liable for incidental, consequential or punitive damages.

#### Contact Bertin Bioreagent

Parc d'Activités du Pas du Lac  
10 bis avenue Ampère  
78180 Montigny le Bretonneux - France  
Tel.: +33 (0)139 306 036

<https://www.bertin-bioreagent.com/pa206/contact-us>  
<https://www.bertin-bioreagent.com>