

# Product Information

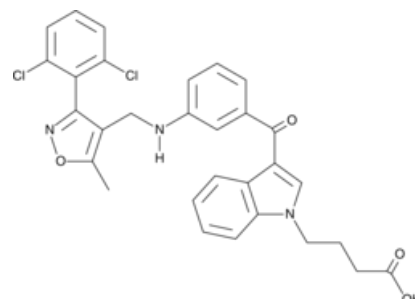


**DS16570511**

Cat No: 24160 - 1 mg

## General Data

<b>Shipping:</b>	dry ice
<b>Formulation:</b>	A crystalline solid
<b>Purity:</b>	≥95%



## Product Overview

DS16570511 is an inhibitor of the mitochondrial calcium uniporter.<sup>{43404}</sup> It inhibits calcium uptake by mitochondria isolated from HEK293A cells, rat heart, and pig heart (IC<sub>50</sub>s = 0.86, 25, and 15  $\mu$ M, respectively). DS16570511 inhibits fetal bovine serum-induced mitochondrial calcium influx as well as MCU- and MICU1-dependent increases in calcium influx in HEK293A cells (IC<sub>50</sub> = 7  $\mu$ M) but has no effect on mitochondrial membrane potential. Ex vivo, DS16570511 inhibits mitochondrial calcium overload induced by high calcium concentrations in isolated rat hearts. It also reversibly increases cardiac contractility without affecting heart rate.

FP/23/24

For research laboratory use only – Not for human diagnostic use.

Buyers agree to purchase the material subject to Purchasing Terms that can be found on our website. Seek appropriate training to safely handle this product under normal conditions. Use the recommended personal protective equipment to prevent chemical exposures.

Bertin Bioreagent does not make any other warranty or representation whatsoever whether expressed or implied, with respect to these products. In no event will Bertin Bioreagent be liable for incidental, consequential or punitive damages.

### Contact Bertin Bioreagent

Parc d'Activités du Pas du Lac  
10 bis avenue Ampère  
78180 Montigny le Bretonneux - France  
Tel.: +33 (0)139 306 036

<https://www.bertin-bioreagent.com/pa206/contact-us>  
<https://www.bertin-bioreagent.com>