

Product Information

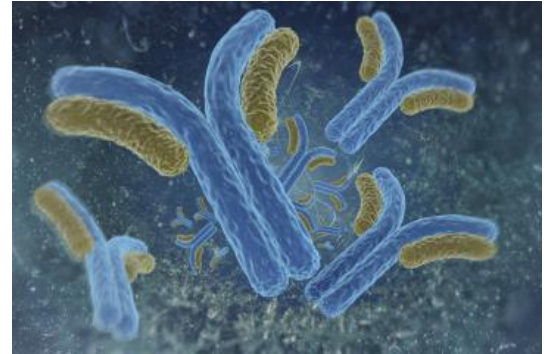


Leukotriene C4, D4, E4 Monoclonal Antibody

Cat No: C03025 - 500 dtn

General Data

Shipping:	Dry Ice
Formulation:	This vial contains 500 determinations of antibody in Ascitic fluid 1/20.
Storage Buffer:	Phosphate Buffer
Host:	Mouse
Antigen:	LTC4-KLH
Application(s):	RIA
Specificity:	% CROSS REACTIVITY for B/Bo = 50 % Leukotriene B4 < 0,01% Leukotriene C4 75% Leukotriene D4 74% Leukotriene E4 100% Arachidonic acid < 0,01% Cysteine < 0,01% Glutathion < 0,01%



FP/12/24

For research laboratory use only – Not for human diagnostic use.

Buyers agree to purchase the material subject to Purchasing Terms that can be found on our website. Seek appropriate training to safely handle this product under normal conditions. Use the recommended personal protective equipment to prevent chemical exposures.

Bertin Bioreagent does not make any other warranty or representation whatsoever whether expressed or implied, with respect to these products. In no event will Bertin Bioreagent be liable for incidental, consequential or punitive damages.

Contact Bertin Bioreagent

Parc d'Activités du Pas du Lac
10 bis avenue Ampère
78180 Montigny le Bretonneux - France
Tel.: +33 (0)139 306 036

<https://www.bertin-bioreagent.com/pa206/contact-us>
<https://www.bertin-bioreagent.com>