



## TIF1 $\delta$ (Transcriptional intermediary factor 1d) Monoclonal Antibody

Cat No: G01102 - 100  $\mu$ L

### General Data

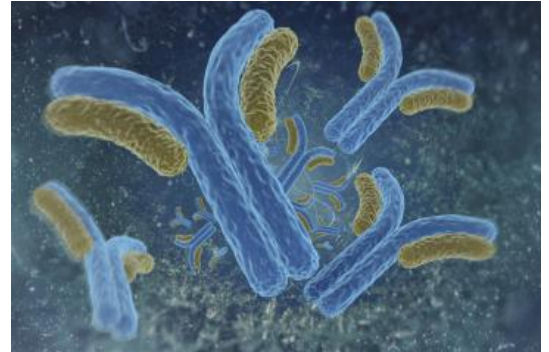
<b>Shipping:</b>	wet ice
<b>Formulation:</b>	Liquid Ascite, does not contain any preservative therefore avoid repeat freezing and thawing cycles
<b>Host:</b>	Mouse
<b>Antigen:</b>	Synthetic peptide coupled to ovalbumin
<b>Clone:</b>	1A8
<b>Isotype:</b>	IgG1, $\kappa$

<b>Application(s):</b>	ELISA
	Western Blot
	Immunocytochemistry
	Immunohistochemistry
	Recommended dilutions: 1/500-1/5000

**Specificity:** human and mouse TIF1 . No cross reactivity on TIF1 and TIF1 .

### Scientific Literature

Khetchoumian K, Teletin M, Mark M, Lerouge T, Cervino M, Oulad-Abdelghani M, Chambon P, Losson R. TIF1 $\delta$ , a novel HP1-interacting member of the transcriptional intermediary factor 1 (TIF1) family expressed by elongating spermatids. J Biol Chem. 2004 Nov 12;279(46):48329-41



FP/23/24

**For research laboratory use only – Not for human diagnostic use.**

Buyers agree to purchase the material subject to Purchasing Terms that can be found on our website. Seek appropriate training to safely handle this product under normal conditions. Use the recommended personal protective equipment to prevent chemical exposures.

Bertin Bioreagent does not make any other warranty or representation whatsoever whether expressed or implied, with respect to these products. In no event will Bertin Bioreagent be liable for incidental, consequential or punitive damages.

### Contact Bertin Bioreagent

Parc d'Activités du Pas du Lac  
10 bis avenue Ampère  
78180 Montigny le Bretonneux - France  
Tel.: +33 (0)139 306 036  
<https://www.bertin-bioreagent.com/pa206/contact-us>  
<https://www.bertin-bioreagent.com>