

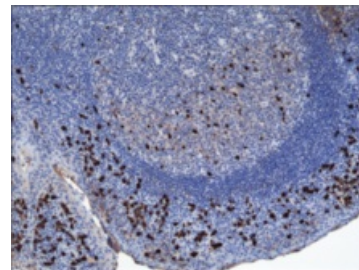


IgA1 (human) Rabbit Monoclonal Antibody - Biotinylated

Cat No: 32369 - 50 µg

General Data

Shipping:	dry ice
Formulation:	50 µg of protein-A affinity purified monoclonal antibody
Host:	Rabbit
Antigen:	Human IgA
Clone:	RM124
Isotype:	IgG



Immunohistochemical staining of human tonsil tissue using IgA1 (human) Rabbit Monoclonal Antibody - Biotinylated.

Application(s): ELISA, IHC, ICC

Product Overview

Immunoglobulin A (IgA) is a member of the immunoglobulin superfamily of glycoproteins with roles in host defense against intestinal pathogens and both quantitative and qualitative control of host commensal microbiota composition.{53918,53919} Human IgA consists of two identical light chains of approximately 25 kDa each, as well as two heavy chains of approximately 60 kDa each that contain C-terminal extensions, known as tailpieces, which allow for IgA oligomerization.{53927,53925} There are two IgA subclasses, IgA1 and IgA2, which are encoded by IGHA1/α1 and IGHA2/α2, respectively, and have differences primarily in the hinge and heavy chain constant regions.{53925} IgA is produced by B cells and later secreted by plasma cells and is the most abundant antibody on mucosal surfaces that comprises at least 70% of all Ig produced in mice.{53918,53919} Monomeric IgA1 is predominant in the serum, but dimeric secretory IgA (SIgA) is the predominant form in mucosal surfaces and secretions with the ratio of subclasses varying based on the IgA-secreting cell types present.{53925,53921} Dimeric and polymeric IgA bind to Igα Fc receptor I (FcαRI) and the IgM- and IgA-binding high affinity Igα and Igμ Fc receptor (Fcα/μ-R), which are both involved in mediating immune responses.{53921,53922} Production of IgA is induced in the gut only in animals containing intestinal microbes, and the number of IgA-producing plasma cells is reduced in germ-free mice.{53918} The extended hinge region of IgA1 contains O-linked glycan side chains, which have altered galactosylation and form circulating immune complexes in patients with IgA neuropathy (IgAN), an autoimmune inflammatory disease characterized by IgA1-containing deposits in the glomerular mesangium, tea-colored urine, proteinuria, and, potentially, renal failure.{56183,56184} IgA levels are increased in certain gastrointestinal tract and liver diseases, with IgA1 levels increased to a higher degree than IgA2 levels in patients with chronic hepatitis.{56183} Cayman's IgA1 (human) Rabbit Monoclonal Antibody - Biotinylated can be used for ELISA, immunocytochemistry (ICC), and immunohistochemistry (IHC) applications.

FP/17/24

For research laboratory use only – Not for human diagnostic use.

Buyers agree to purchase the material subject to Purchasing Terms that can be found on our website. Seek appropriate training to safely handle this product under normal conditions. Use the recommended personal protective equipment to prevent chemical exposures.

Bertin Bioreagent does not make any other warranty or representation whatsoever whether expressed or implied, with respect to these products. In no event will Bertin Bioreagent be liable for incidental, consequential or punitive damages.

Contact Bertin Bioreagent

Parc d'Activités du Pas du Lac
10 bis avenue Ampère
78180 Montigny le Bretonneux - France
Tel.: +33 (0)139 306 036

<https://www.bertin-bioreagent.com/pa206/contact-us>
<https://www.bertin-bioreagent.com>