

Product Information



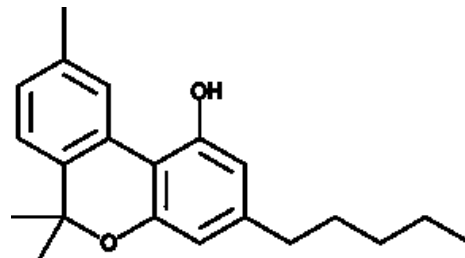
Cannabinol (CRM)

Cat No: ISO60183 - 1 mg

General Data

Shipping: dry ice

Formulation: A 1 mg/ml solution in methanol



Product Overview

Cannabinol (CRM) (Item No. ISO60183) is a certified reference material categorized as a phytocannabinoid. This product is intended for research and forensic applications.

FP/20/24

For research laboratory use only – Not for human diagnostic use.

Buyers agree to purchase the material subject to Purchasing Terms that can be found on our website. Seek appropriate training to safely handle this product under normal conditions. Use the recommended personal protective equipment to prevent chemical exposures.

Bertin Bioreagent does not make any other warranty or representation whatsoever whether expressed or implied, with respect to these products. In no event will Bertin Bioreagent be liable for incidental, consequential or punitive damages.

Contact Bertin Bioreagent

Parc d'Activités du Pas du Lac
10 bis avenue Ampère
78180 Montigny le Bretonneux - France
Tel.: +33 (0)139 306 036

<https://www.bertin-bioreagent.com/pa206/contact-us>
<https://www.bertin-bioreagent.com>