

# Product Information



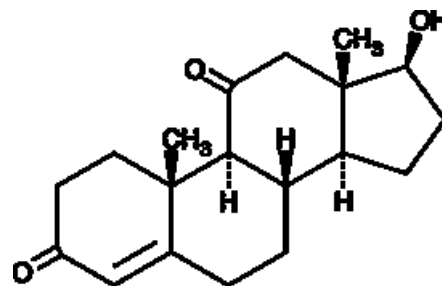
## 11-keto Testosterone (CRM)

Cat No: 9002564 - 1 mg

### General Data

**Shipping:** dry ice

**Formulation:** A 1 mg/ml solution in acetonitrile



**Special advice:** Reference Materials RMs and Certified Reference Materials CRMs are dispatched directly to the end-user in accordance with ISO requirements. Please check regulation status before ordering; additional fees can apply.

### Product Overview

11-keto Testosterone (CRM) (Item No. 9002654) is a certified reference material that is structurally categorized as an androgen. It is a significant hormone in certain fish, regulating the development of sexual development and behavior. {9021,30805} 11-keto Testosterone binds the stickleback kidney androgen receptor (EC<sub>50</sub> = 43 nM). {30806} 11-keto Testosterone, at 10 nM, significantly activates the human androgen receptor expressed in zebrafish liver cells. {30806} This product is intended for research and forensic applications.

FP/17/24

For research laboratory use only – Not for human diagnostic use.

Buyers agree to purchase the material subject to Purchasing Terms that can be found on our website. Seek appropriate training to safely handle this product under normal conditions. Use the recommended personal protective equipment to prevent chemical exposures.

Bertin Bioreagent does not make any other warranty or representation whatsoever whether expressed or implied, with respect to these products. In no event will Bertin Bioreagent be liable for incidental, consequential or punitive damages.

#### Contact Bertin Bioreagent

Parc d'Activités du Pas du Lac  
10 bis avenue Ampère  
78180 Montigny le Bretonneux - France  
Tel.: +33 (0)139 306 036

<https://www.bertin-bioreagent.com/pa206/contact-us>  
<https://www.bertin-bioreagent.com>