

Product Information

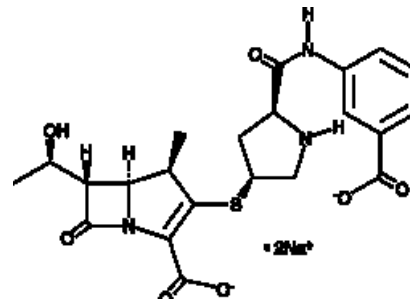


Ertapenem (sodium salt)

Cat No: 20523 - 1 mg

General Data

Shipping:	dry ice
Formulation:	A crystalline solid
Purity:	≥98%



Product Overview

Ertapenem is a long-acting, broad-spectrum antibiotic that is in the β -lactam subclass known as carbapenems. {27718,27720,27719} It inhibits the synthesis of bacterial cell walls by attaching to penicillin-binding proteins. Ertapenem is effective against Gram-positive and Gram-negative bacteria. {32520,32521} Resistance to ertapenem results from the expression of certain β -lactamases and carbapenemases. {32519}

FP/19/24

For research laboratory use only – Not for human diagnostic use.

Buyers agree to purchase the material subject to Purchasing Terms that can be found on our website. Seek appropriate training to safely handle this product under normal conditions. Use the recommended personal protective equipment to prevent chemical exposures.

Bertin Bioreagent does not make any other warranty or representation whatsoever whether expressed or implied, with respect to these products. In no event will Bertin Bioreagent be liable for incidental, consequential or punitive damages.

Contact Bertin Bioreagent

Parc d'Activités du Pas du Lac
10 bis avenue Ampère
78180 Montigny le Bretonneux - France
Tel.: +33 (0)139 306 036

<https://www.bertin-bioreagent.com/pa206/contact-us>
<https://www.bertin-bioreagent.com>