

Product Information

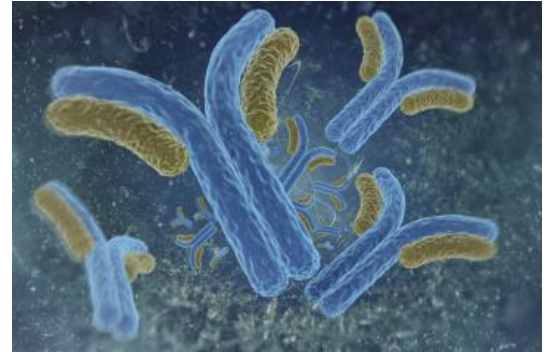


ETS1 (C-terminal region) Monoclonal Antibody

Cat No: G01013 - 100 µL

General Data

Shipping:	wet ice
Formulation:	Liquid Ascite, does not contain any preservative therefore avoid repeat freezing and thawing cycles
Host:	Mouse
Antigen:	synthetic peptide coupled to ovalbumin
Clone:	1C10
Isotype:	IgG1, κ
Application(s):	ELISA Western blot Immunofluorescence recommended dilution: 1/500-1/5000



Product Overview

ETS is one of the largest family of TF (with 28 members in Human). Protein C-ets-1 is a protein that in humans is encoded by the ETS1. ETS1 is playing an important role in immune cells, and tissues.

FP/28/24

For research laboratory use only – Not for human diagnostic use.

Buyers agree to purchase the material subject to Purchasing Terms that can be found on our website. Seek appropriate training to safely handle this product under normal conditions. Use the recommended personal protective equipment to prevent chemical exposures.

Bertin Bioreagent does not make any other warranty or representation whatsoever whether expressed or implied, with respect to these products. In no event will Bertin Bioreagent be liable for incidental, consequential or punitive damages.

Contact Bertin Bioreagent

Parc d'Activités du Pas du Lac
10 bis avenue Ampère
78180 Montigny le Bretonneux - France
Tel.: +33 (0)139 306 036

<https://www.bertin-bioreagent.com/pa206/contact-us>
<https://www.bertin-bioreagent.com>